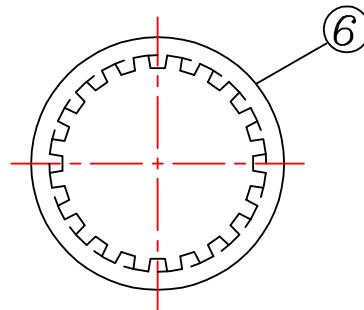
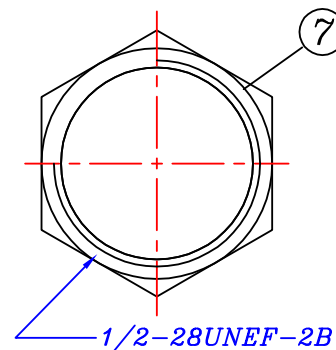


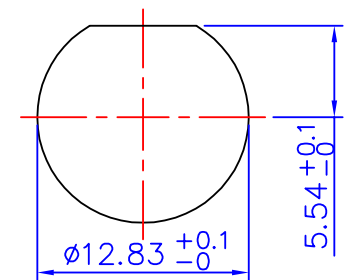
RECOMMENDED PC BOARD LAYOUT  
WITHOUT MOUNTING POSTS



WASHER



CLAMP NUT



RECOMMENDED MOUNTING HOLE  
MAXIMUM PANEL THICKNESS: 5.5MM

**MATERIAL & FINISH**

- ① CENTER CONTACT : PHOSPHOR BRONZE, GOLD PLATING
- ② BODY : ZINC ALLOY, NICKEL PLATING
- ③ INSULATOR : PE-606
- ④ MOUNTING POST : BRONZE, TIN PLATING
- ⑤ SOLDER TAIL : COPPER WIRE, TIN PLATING
- ⑥ WASHER : STEEL, NICKEL PLATING
- ⑦ NUT : BRASS, NICKEL PLATING

BNC-JRZ13WFM-75-LF  
LEADFREE

RoHS Compliant



PART NO. BNC-JRZ13WFM-75

DWG NO. BNC-JRZ13WFM-75

FILE NO.

UNIT / mm

SCALE 1:1

CHECKED BY CY

DRAWING BY

PROJECTION

TOLERANCES ARE

- X. ± 0.5
- .X ± 0.3
- .XX ± 0.2
- .XXX ±
- ANG

DESCRIPTION:

75Ω BNC R/A PCB  
MOUNT JACK, METAL BODY WITH FITTING

AREA

REVISIONS

DATE

焜倫股份有限公司