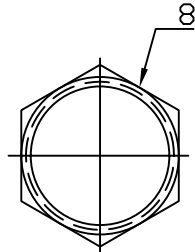
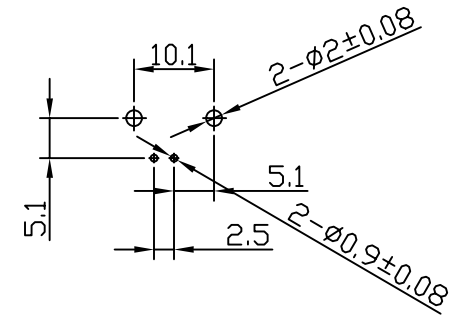
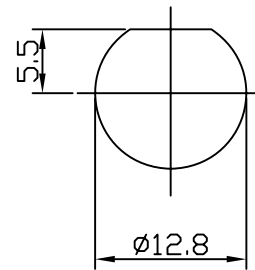


LOCK WASHER



1/2-28UNEF-2B  
CLAMP NUT



RECOMMENDED MOUNTING HOLE  
MAXIMUM PANEL THICKNESS: 5.5MM  
RECOMMENDED MOUNTING TORQUE:  
12 INCH-POUNDS MAX

BNC-JR15XBK-50-LF  
LEADFREE

RoHS Compliant

| NO | DESCRIPTION    | MATERIAL               | FINISH   | QTY |
|----|----------------|------------------------|----------|-----|
| 8  | NUT            | BRASS                  | NICKEL   | 1   |
| 7  | WASHER         | PHOSPHOR BRONZE        | NICKEL   | 1   |
| 6  | SOLDER TAIL    | BRASS WIRE             | TIN LEAD | 1   |
| 5  | MOUNTING POST  | BRASS                  | TIN LEAD | 1   |
| 4  | INSULATOR      | POLYPROPYLENE (94 V-0) | NONE     | 1   |
| 3  | HOUSING        | NAN YA PBT(94 V-0)     | NONE     | 1   |
| 2  | BODY           | ZINC ALLOY             | NICKEL   | 1   |
| 1  | CENTER CONTACT | PHOSPHOR BRONZE        | GOLD     | 1   |



PART NO. BNC-JR15XBK-50

DWG NO. BNC-JR15XBK-50

FILE NO.

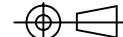
UNIT / mm

SCALE 1:1

CHECKED BY CY

DRAWING BY

PROJECTION



| UNLESS OTHERWISE SPECIFIED TOLERANCES |      |
|---------------------------------------|------|
| 0.5-5                                 | ±0.2 |
| 6-30                                  | ±0.4 |
| 30-120                                | ±0.6 |
| 120-315                               | ±1   |
| 315-1000                              | ±1.6 |
| 1000-2000                             | ±2.4 |

| DESCRIPTION: | BNC CONNECTOR, PCB/PANEL MOUNT JACKS |           |    |      |
|--------------|--------------------------------------|-----------|----|------|
|              | AREA                                 | REVISIONS | HK | DATE |
|              |                                      |           |    |      |

焯倫股份有限公司