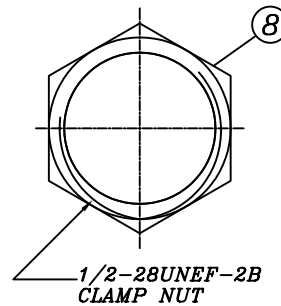
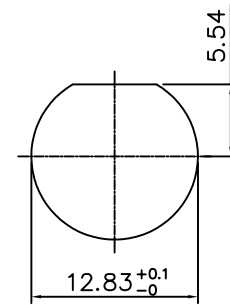


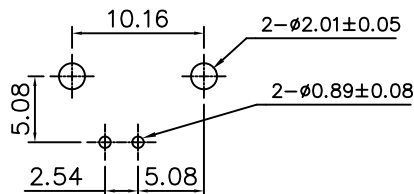
LOCK WASHER



1/2-28UNEF-2B CLAMP NUT



RECOMMENDED MOUNTING HOLE  
MAXIMUM PANEL THICKNESS: 5.5MM



RECOMMENDED PCB BOARD LAYOUT  
WITHOUT MOUNTING POSTS

MATERIAL & FINISH

- ① CENTER CONTACT : BRONZE, GOLD PLATING
- ② BODY : ZINC ALLOY NICKEL PLATING
- ③ HOUSING : PBT (94 V-0)
- ④ INSULATOR : PE-606
- ⑤ MOUNTING POST : BRONZE, TIN PLATING
- ⑥ SOLDER TAIL : COPPER WIRE, TIN PLATING
- ⑦ WASHER : STEEL, NICKEL PLATING
- ⑧ NUT : BRASS, NICKEL PLATING

RoHS Compliant

TOLERANCES ARE



煜倫股份有限公司

www.morethanall.com

DRAWING BY CY

CHECKED BY GENIUS

UNIT / mm

SCALE 1 : 1

DATE

SIZE A4

PJECTION

X, ±  
.X ±  
.XX ±  
.XXX ±  
ANG ±

照片框

ORDER INFORMATION

BNC-JR12Wxx-50-LF  
SERIES | | | LEADFREE  
JACK | | | 50 OHM  
DIP 90° | | | BK:BLACK  
WH:WHITE  
WASHER+NUT  
HIGH 13.16mm

DESCRIPTION: 50 OHM BNC R/A PCB MOUNT JACK