

MATERIAL
INSULATION: VINYL
MATERIAL: BRASS
TIN PLATING

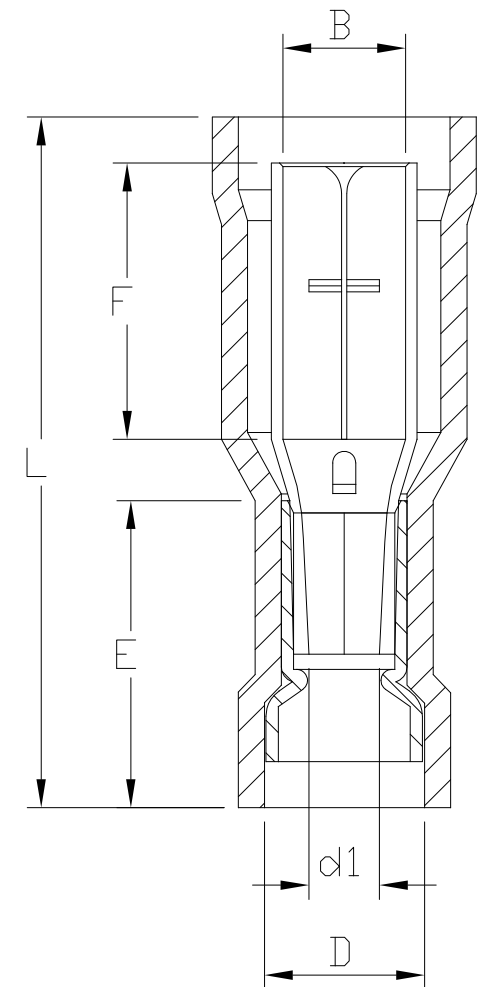
MAXIMUM ELECTRIC CURRENT

A. W. G	22	20	18	16	14	12	10
MAX AMP	3	4	7	10	15	20	24

NOTE:

1. MAXIMUM ELECTRICAL RATING: 75°C 300 VOLTS
2. REINFORCEMENT SLEEVE: C TYPE SLEEVE
3. WIRE RANGE: 16-14 AWG / 1.5-2.5 mm²
INSULATED COLOR: BLUE
4. MATERIAL THICKNESS: t
TOLERANCE: ±0.05

WIRE RANGE AWG/mm ²	產品編號 ITEM NO.	B ±0.20	F ±0.50	L ±1.00	E ±0.60	D ±0.50	d1 ±0.20	t
16-14 AWG 1.5-2.5 mm ²	BLT50-FTVF-14	5.0	9.0	23.5	11.0	5.0	2.3	0.4



RoHS Compliant

TOLERANCES ARE

MORETHANALL
 PCB CONNECTORS
 Cable ASSEMBLIES

煜倫股份有限公司

www.morethanall.com

DRAWING BY CY

CHECKED BY GENIUS

UNIT / mm

SCALE 1:1

DATE

SIZE A4

X. ±
 .X ±
 .XX ±
 .XXX ±
 ANG ±

PJECTION

照片框

ORDER INFORMATION

BLT50-FTVF-14-LF

SERIES LEADFREE
 14-16 AWG
 FULL
 PVC
 TERMINAL
 FEMALE

DESCRIPTION: