

# MATERIAL

INSULATION:NON  
MATERIAL:COPPER  
TIN PLATING

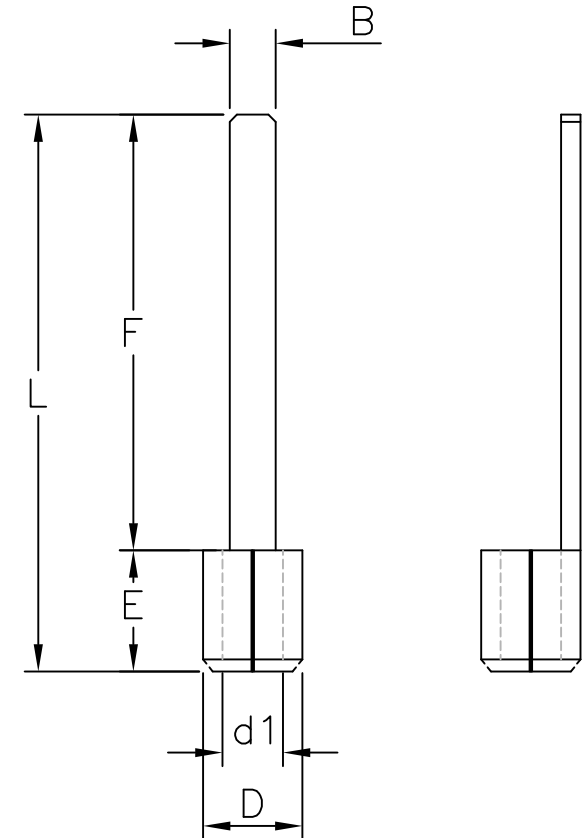
NOTE:

1. BRAZED SEAM
2. WIRE RANGE:22-16 AWG / 0.5-1.5 mm<sup>2</sup>
3. WIRE RANGE:16-14 AWG / 1.5-2.5 mm<sup>2</sup>
4. WIRE RANGE:12-10 AWG / 4-6 mm<sup>2</sup>
5. MATERIAL THICKNESS:t  
TOLERANCE:±0.05

## MAXIMUM ELECTRIC CURRENT

A. W. G	22	20	18	16	14	12	10
MAX AMP	9	12	17	18	30	35	50

WIRE RANGE AWG/mm <sup>2</sup>	產品編號 ITEM NO.	B ±0.20	F ±0.40	L ±1.00	E ±0.60	D ±0.30	d1 ±0.20	t
22-16 AWG 0.5-1.5 mm <sup>2</sup>	BDT-X10-16	2.4	10.7	15.7	5.0	3.4	1.7	0.75
	BDT-X11-16	3.0	11.0	16.0				
	BDT-X14-16	3.0	14.0	19.0				
	BDT-X18-16	2.4	18.0	23.0				
16-14 AWG 1.5-2.5 mm <sup>2</sup>	BDT-X09-14	2.8	9.0	14.0	5.0	4.1	2.3	0.8
	BDT-X10-14	2.4	10.7	15.7				
	BDT-X13-14	2.4	13.0	18.0				
	BDT-X18-14	2.4	18.0	23.0				
12-10 AWG 4-6 mm <sup>2</sup>	BDT-X10-10	2.8	10.0	16.0	6.0	5.6	3.4	1.0
	BDT-X14-10	4.0	14.0	20.0				
	BDT-X14W45-10	4.5	14.0	20.0				
	BDT-X18-10	3.0	18.0	24.0				



RoHS Compliant

TOLERANCES ARE

**MORETHANALL**  
PCB CONNECTORS  
Cable ASSEMBLIES

DRAWING BY CY

X.±

CHECKED BY GENIUS

.X±

UNIT / mm

SCALE 1:1

.XX±

DATE

.XXX±

ANG±

SIZE A4

PJECTION

照片框

### ORDER INFORMATION

BDT-Xxx-xx-LF

SERIES | LEADFREE  
16:16-22AWG  
14:14-16AWG  
10:10-12AWG  
NON VINYL | 10:F LONG 10.7mm  
18:F LONG 18mm

煜倫股份有限公司

www.morethanall.com

DESCRIPTION: