

MATERIAL

INSULATION: VINYL

MATERIAL: COPPER

TIN PLATING

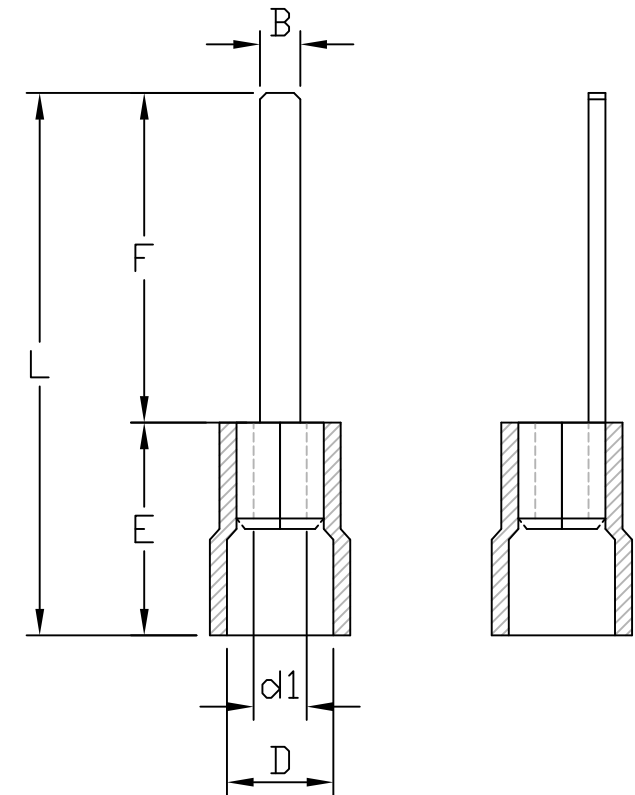
NOTE:

1. MAXIMUM ELECTRICAL RATING: 75°C 600 VOLTS
2. WIRE RANGE: 22-16 AWG / 0.5-1.5 mm²
INSULATED COLOR: RED
3. WIRE RANGE: 16-14 AWG / 1.5-2.5 mm²
INSULATED COLOR: BLUE
4. WIRE RANGE: 12-10 AWG / 4-6 mm²
INSULATED COLOR: YELLOW
5. MATERIAL THICKNESS: t
TOLERANCE: ±0.05

MAXIMUM ELECTRIC CURRENT

A. W. G	22	20	18	16	14	12	10
MAX AMP	9	12	17	18	30	35	50

WIRE RANGE AWG/mm ²	產品編號 ITEM NO.	B ±0.20	F ±0.40	L ±1.00	E	D ±0.30	d1 ±0.20	t
22-16 AWG 0.5-1.5 mm ²	BDT-V10-16	2.4	10.7	20.7	10.0	4.1	1.7	0.75
	BDT-V11-16	3.0	11.0	21.0				
	BDT-V14-16	3.0	14.0	24.0				
	BDT-V18-16	2.4	18.0	28.0				
16-14 AWG 1.5-2.5 mm ²	BDT-V09-14	2.8	9.0	19.0	10.0	4.5	2.3	0.8
	BDT-V10-14	2.4	10.7	20.7				
	BDT-V13-14	2.4	13.0	23.0				
	BDT-V18-14	2.4	18.0	28.0				
12-10 AWG 4-6 mm ²	BDT-V10-10	2.8	10.0	23.0	13.0	6.5	3.4	1.0
	BDT-V14-10	4.5	14.0	27.0				
	BDT-V18-10	3.0	18.0	31.0				



RoHS Compliant

TOLERANCES ARE

MORETHANALL
PCB CONNECTORS
Cable ASSEMBLIES

DRAWING BY CY

X.±

CHECKED BY GENIUS

.X±

UNIT / mm

SCALE 1:1

.XX±

DATE

.XXX±

ANG±

SIZE A4

P PROJECTION

照片框

ORDER INFORMATION

BDT-Vxx-xx-LF
SERIES | LEADFREE
16:16-22AWG
14:14-16AWG
10:10-12AWG
VINYL 10:F LONG 10.7mm
18:F LONG 18mm

煜倫股份有限公司

www.morethanall.com

DESCRIPTION: