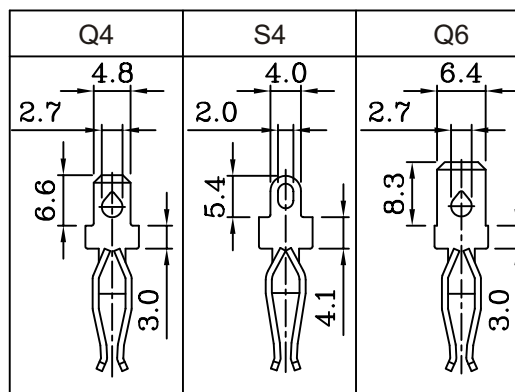
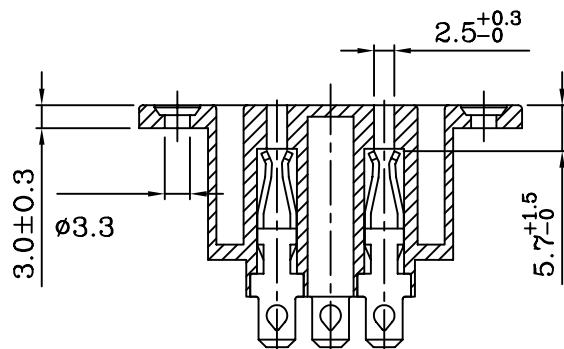


PANEL CUT-OUT



SPECIFICATION:

1. Insulation Resistance: Over 100MΩ at 500V DC.
2. Dielectric strength: 2000V AC 1 Minute.
3. Body Material: Thermoplastic 94V-2~V-0.

Rating:AC 15A 250V	
Mark	Safety Regulation
	UL
	CUL
Rating:AC 10A 250V	
Mark	Safety Regulation
	VDE
	SEMKO
	DEMKO
	NEMKO
	FIMKO
	CCC

RoHS Compliant

TOLERANCES ARE

MORETHANALL
PCB CONNECTORS
Cable ASSEMBLIES

DRAWING BY CY

CHECKED BY GENIUS

UNIT / mm SCALE 1 : 1

DATE

SIZE A4

X, ±
.X ±
.XX ±
.XXX ±
ANG ±

PJECTION

照片框

ORDER INFORMATION

ACF-SxxPE-03-LF

SERIES | | | LEADFREE

03WAY
PANEL EAR

FEMALE Q4:QUICK/TAB/4.8mm
S4:SOLDER/TAB/4.0mm
Q6:QUICK/TAB/6.4mm

煜倫股份有限公司

www.morethanall.com

DESCRIPTION: