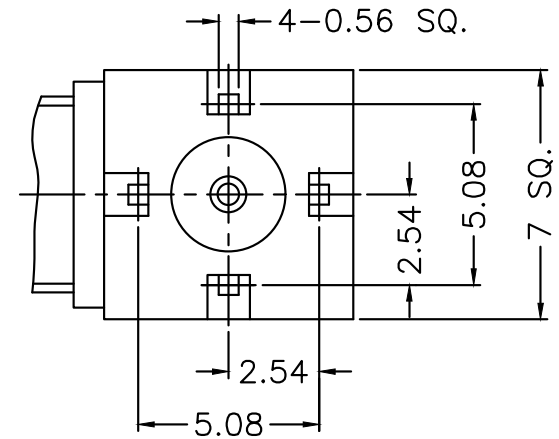
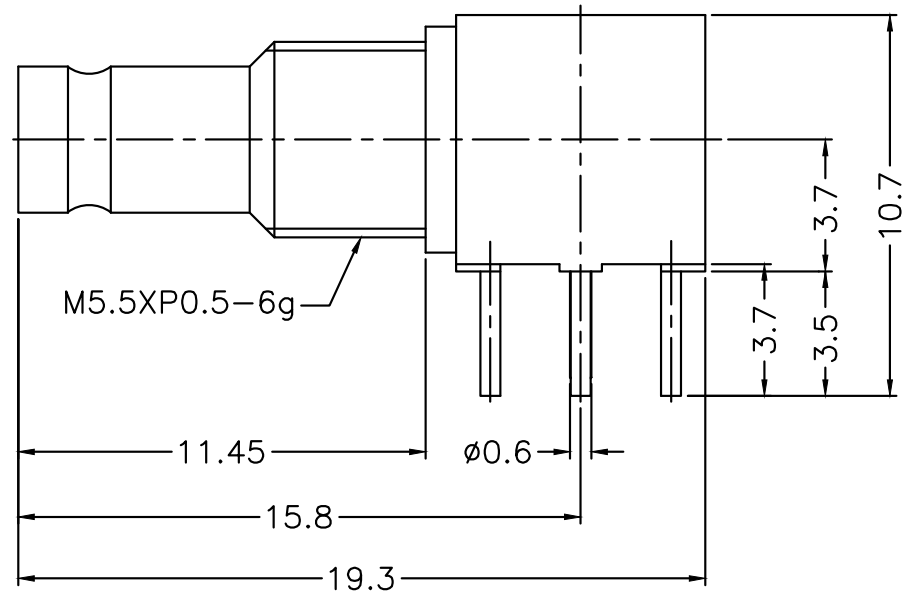


RECOMMENDED  
MOUNTING HOLE  
(建議架設孔)



NOTES: FINISH (PLATING THICKNESS IN MICRO-INCHES)

1. BRASS
2. THIN GOLD OVER NICKEL PL. 50 MIN. THICK OVER COPPER PL. 50 MIN. THICK
3. BERYLLIUM COPPER
4. GOLD PL. 3 MIN. THICK OVER NICKEL PL. 50 MIN. THICK OVER COPPER PL. 50 MIN. THICK
5. TEFLON

NO.	DESCRIPTION	MATERIAL	FINISH	Q'TY
5	INSULATOR	NOTE 5	NATURAL	1
4	BODY	NOTE 1	NOTE 2	1
3	INSULATOR	NOTE 5	NATURAL	1
2	CONTACT PIN	NOTE 3	NOTE 4	1
1	HOUSING	NOTE 1	NOTE 2	1

RoHS Compliant

TOLERANCES ARE

**MORETHANALL**  
PCB CONNECTORS  
Cable ASSEMBLIES

煜倫股份有限公司

www.morethanall.com

DRAWING BY CY

CHECKED BY GENIUS

UNIT / mm SCALE 1 : 1

DATE

SIZE A4

PJECTION

0.5-6 = ±0.2  
6-30 = ±0.4  
30-120 = ±0.6  
120-315 = ±1  
315-1000 = ±1.6  
1000-2000 = ±2.4

照片框

ORDER INFORMATION

1023-JRGPB-50-LF

SERIES | LEADFREE  
50 OHM  
PANEL BACK  
GOLD  
DIP 90°  
JACK

DESCRIPTION: 1.0/2.3 R/A PCB JACK